

# Temperature measurement

## Increased security during pandemics and normal operation

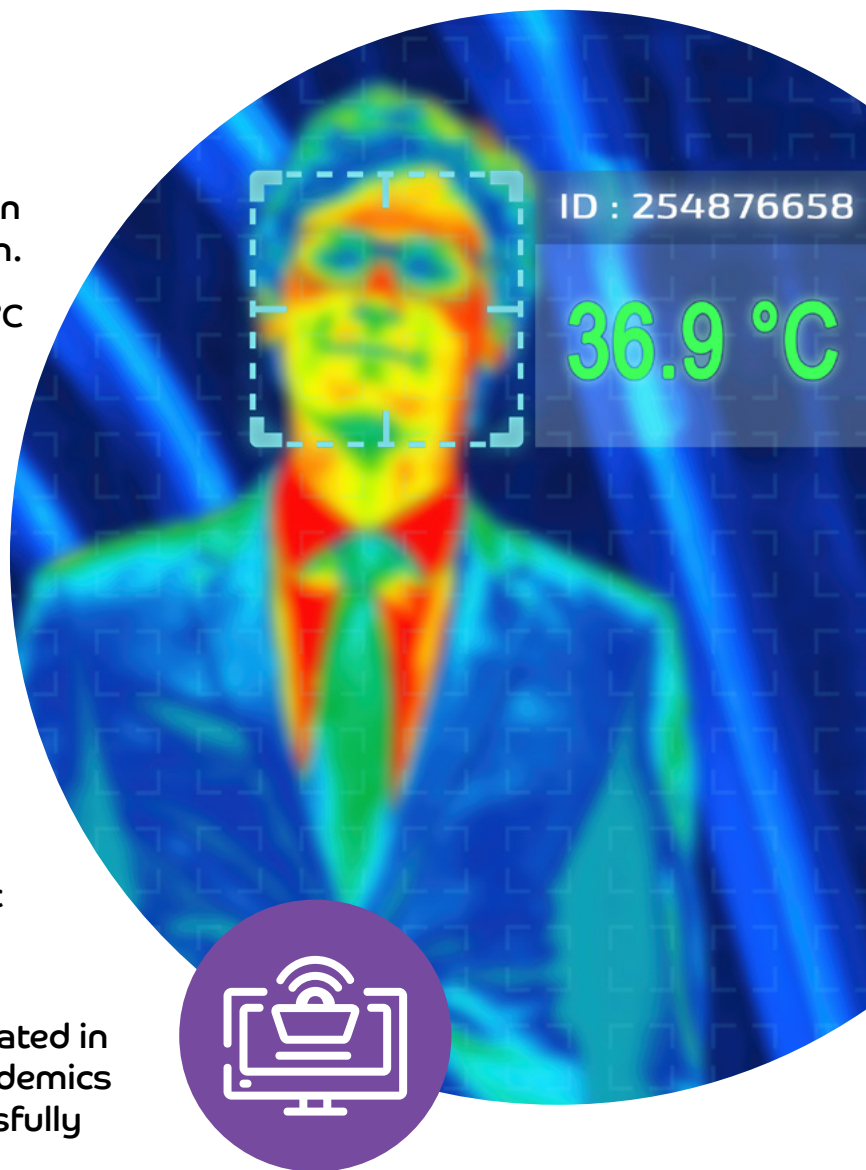
In order to protect the health of employees, customers and suppliers, SWAN now offers its business customers a way to identify persons with a fever to prevent the spread of infectious diseases in their facilities. This solution can be tailored to exactly meet the customer's needs – whether it's a simple temperature measurement at the entrance to the building or a camera solution with data uploaded to the SWAN cloud for further analysis.

The temperature measurement service is a complex, cost-effective and reliable solution for businesses of all shapes and sizes. Its main function is to protect human health and ensure smooth operation.

- Measurement precision from  $\leq 0.3$  °C
- Measurement speed from  $\leq 0.03$  s
- Automatic calibration
- Detects up to 99.85 % of faces without a mask
- Detects up to 95 % of faces with a mask

The temperature measurement is a video IoT solution using technologies such as smart face recognition, temperature measurement using infrared thermovision, "big data" analyses, and several technologies to connect the cameras including 4G and 5G.

The system used by SWAN was created in reaction to the SARS and MERS epidemics in the Far East and was also successfully deployed to combat COVID-19.



## Service advantages



- Precise real-time identification of individuals with a fever
- Immediate signalisation when the set value is exceeded
- Possibility to select multiple technologies and products
- Possibility of monitoring multiple entrances or large spaces
- Secure data transfer and data storage
- Access from a PC client or a mobile app

## Service use



- Ensures business continuity through improved health protection
- Contactless temperature measurement
- Identification of people not wearing a mask
- Suitable for store chains, administrative buildings, shopping centres, office buildings, schools, catering establishments, sports fields, bus and train stations, airports, etc.
- Multiple cameras with unified access and management

The temperature measurement service can be used during a pandemics, during the flu season, and even during low risk periods. SWAN offers several available technologies, each suitable for different premises. The built-in AI algorithm can measure the temperature of multiple people at once at a distance of up to 5 metres from the camera, which allows the service to be used in smaller premises, artificially created corridors and in larger entrance halls. Multiple cameras can be linked to a single system to cover large spaces with multiple entry points.

**For more information on pricing and special promotions, please contact:**

**#stayhome**